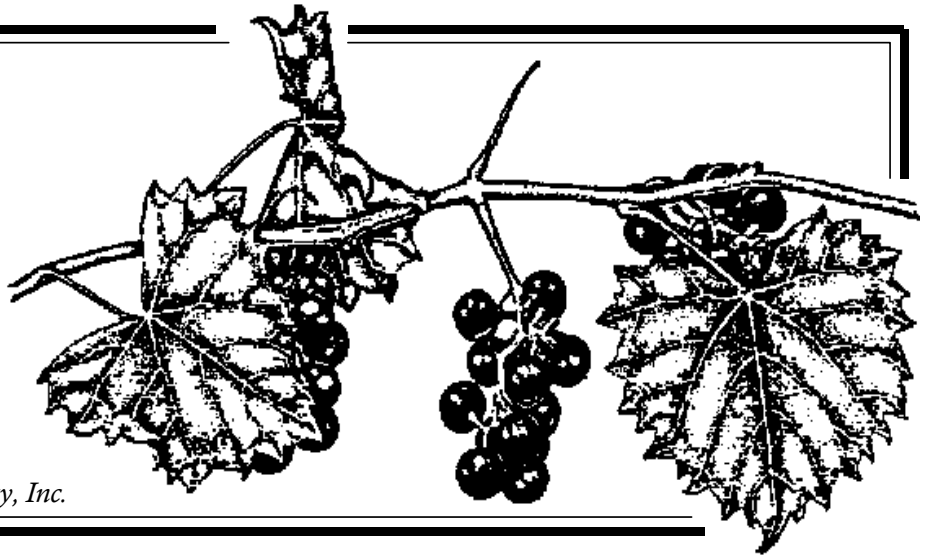


[www.suncoastnps.org](http://www.suncoastnps.org)

# The Suncoast Grapevine

*Newsletter of the Suncoast Native Plant Society, Inc.*



Volume 27 Number 6

JUNE 2010

## Star Your Garden! Membership Presentation 7pm @ Hillsborough County Extension Service

Enjoy the landscaping successes of fellow SNPS members! Bring your suggestions. Bring your compliments. Bring your questions. Bring lots of smiles!



June is our month to “do it ourselves” – meaning that it is a great opportunity to show off your garden and talk about your goals, challenges, and successes. Please provide either up to 10 photographs (digital) to Shirley ([sdenton@entrix.com](mailto:sdenton@entrix.com)) for inclusion in a Powerpoint Presentation or provide your own Powerpoint Presentation of the same length (bring on a thumb drive or CD). Let Shirley know that you will be speaking. Please keep your presentation “on target” – that is, about your garden/landscape project, not about other topics.

- Submitted by Shirley Denton



The Florida Native Plant Society was organized in 1980 to promote the preservation, conservation, and restoration of the native plants and native plant communities of Florida. For more information about the Florida Native Plant Society, please visit our web site: [www.fnps.org](http://www.fnps.org)

Florida Native Plant Society  
Annual Conference Recap  
May 20-23: Rooted in History, Forever Blooming  
Hosted by the Magnolia Chapter  
Tallahassee, Florida

There are 2 things that I look forward to in May. One is the beautiful weather, and the other has been the FNPS Conference. Being held in Tallahassee this year made it especially appealing. I have not had the chance to explore the woods of North Florida in great detail, so I was very excited to see what that part of the State had to offer.

I made arrangements to stay with Shirley Denton and Gail Parsons at a County Park on Lake Talquin. I arrived very late, and was surprised to learn that I got the room with the view (outside on the ground). The park was great, and the view of the lake from our site was fantastic.

We arrived at the conference center early, and spent the rest of the day at the various talks. It was great to see most of the usual conference participants, and I learned about some of the important natural features of the area. Later that day, we all went to Tall Timbers, a research facility north of Tallahassee. The property was beautiful, and I had one of the best times at an FNPS Social.



The next day, it was all I could do to drag myself out of bed and make it to the conference. I stayed at the conference for a few sessions, but Shirley had ideas of seeing some pitcher plants in Apalachicola National Forest. We took off to the woods, and I have to say that the hike was the best hike I have done in the state of Florida. I had no idea that there were so many carnivorous plants in such high numbers, and all in one place here in Florida. After cleaning up, we made it to the Saturday night social. It was the last chance that we had to hang out with members from other chapters.

Sunday, we ended up taking a walk in a new property added to Torreya State Park. We walked along the bluffs of the Apalachicola River, and its creeks. It is a very different world up there compared to what we have here in Tampa. The trees are enormous, and the plant communities are beautiful. I was delighted to have stumbled upon a Torreya tree, and was even more delighted that I knew what it was.

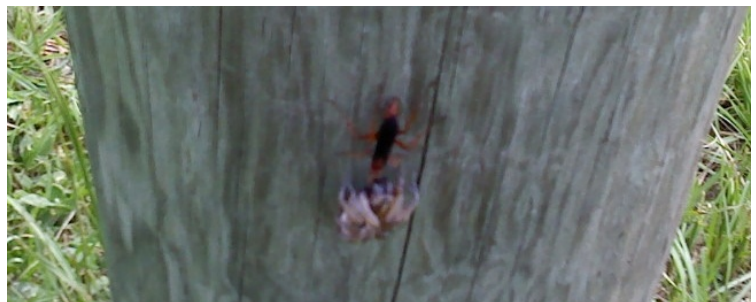
I really enjoyed the time we had at this year's conference. Every time I go to one, I get even more pumped about FNPS, the Suncoast Native Plant Society, and all the work we do. I encourage you to take the time to travel to a conference if you have never been. Luck has it, that the next two conferences will be in Central Florida. **2011 will be in Orlando, and 2012 will be hosted by our chapter in Plant City.** I am really looking forward to getting started on this great event, and hope to see you there!

- Submitted by Troy Springer, Magnolia bloom photo by Shirley Denton

## Things Nature Teaches Us:

**Even if you're a wasp, it's never prudent to take a sting at a tarantula that's twice your width!**

- photo of epic struggle witnessed beneath my bat house,  
Shawna Everidge



## Thank you, May Donors!

### Refreshments:

Barbara Jackson

### Plant donors:

- c Troy Springer
- c Harriet Wright
- c Ron Gilbert
- c James Wheeler
- c Paula Stewart



## Have a Wild Time at the USF Botanical Gardens 12th annual Butterfly, Herb & Native Plant Fair on June 12 & 13!

The USF Botanical Gardens will hold the 12th annual Butterfly, Herb & Native Plant Fair on June 12 from 10:00 to 4:00 p.m. and June 13 from 10:00 to 3:00. Admission is \$5 for general public. USF Botanical Garden members and children under 12 are admitted free. Free parking.

There will be talks throughout both days on butterfly gardening, Florida wildlife, and herb growing. Vendors will be selling butterfly plants, herbs and native plants. First, at 10:00 on Saturday, **Gary Van Cleef**, Garden beekeeper, will have an informative and an introductory overview talk on beekeeping. For the more serious students, there will be a *Beekeeping Workshop* at 10:30. Next, on Saturday morning at 11:00, **Bill Lamoureux**, of the Audubon Society, will be giving a talk on the *Birds of Florida*. The Native Plant Society will be available to answer questions. **George Kish**, native plant expert, will present an entertaining workshop at noon on Saturday about *Native Plants That Attract Butterflies*. **Tom** and **Anita Loveland**, Butterfly Garden curators, will be doing a talk & tour on *Butterfly Gardening* at 1:00.



Sunday will feature the herbs and there will be a talk on **Growing Herbs in Florida** at 11:00 followed at noon with **Using Herbs in the Kitchen**.

Free Children's Activity Area with many educational and fun things to create. There is the Caterpillar petting zoo and a snake pit with educational information. The Garden's new Observation Beehive will be on display.

For more information (813) 910-3274 or web address: [www.cas.usf.edu/garden](http://www.cas.usf.edu/garden)  
Mapquest address: 12210 USF Pine Dr, Tampa, FL 33612

- press release, Kim Hutton

**Editor's Note: Watch for a press coverage interview with George Kish and Kim Hutton scheduled for Monday, June 7th on Fox 13!**

## Local Meetings & Events

compiled by Shawna Everidge, please send submissions to [severidge@plantcitygov.com](mailto:severidge@plantcitygov.com)

### Upcoming Suncoast Native Plant Society Meetings...

- ☼ June—*Share your garden night.*
- ☼ July—*Joint meeting with Audubon and Sierra.* Sierra is hosting. See announcement below.
- ☼ August—**Open**, please send your ideas to [ecotypes@myrapidsys.com](mailto:ecotypes@myrapidsys.com)
- ☼ September—Ann Paul. *Florida Herons and Egrets.*
- ☼ October—Shawna Everidge. *Exotic Pets.*
- ☼ November—John Miller. *Florida Geology as it Relates to Native Plants.*
- ☼ December—*No meeting.*

- Submitted by Shirley Denton

The June field trip will be a visit to our own member's native plant yards. Come see how they do it and what natives they use! More details at June meeting.

—Gail Parsons

### Annual joint meeting of the Tampa Bay Sierra Club, Tampa Audubon and the Suncoast Chapter Native Plant Society

Wednesday, July 14<sup>th</sup> @ 5:30pm

Nature's Classroom

13100 Verges Road

Thonotosassa, FL 33592

(813) 987-6969

The Florida Wildlife Corridor: A Vision for Connecting and Protecting the Florida Frontier

Speaker: Carlton Ward Jr., award-winning photojournalist and founder of Legacy Institute for Nature and Culture

**NOTE: Tours begin at 5:30pm, pot luck dinner at 6:30pm, presentation at 7:30pm. Mark your calendars now, and make sure you observe the different location! Thank you!**

### Call to Action: Bat Conservation International

*Nina Fascione, Executive Director, Bat Conservation International*

A recent episode of Discovery Channel's *Man vs. Wild* featured Bear Grylls gleefully killing bats with a homemade club. The clip, which shows Grylls throwing a flame in a cave to "smoke out" the bats, swatting them to the ground and then stomping on them, has aired internationally and been posted on YouTube, allowing for continued access.

Though we understand the show is about survival, we feel that this clip perpetuates negative attitudes toward bats and could generate senseless copycat activity and/or the type of vandalism that is driving many bat species to the brink of extinction. Only four months ago, a Kentucky man was sentenced to eight months in jail after pleading guilty to beating to death 105 endangered Indiana bats. Please express your disappointment at this anti-conservation message by filling out the [feedback](#) form on Discovery Communications website. Let the Discovery executives know:

- Ⓒ This episode undermines decades of bat conservation efforts. Bats are an important part of a healthy ecosystem.
- Ⓒ They eat agricultural pests, disperse seeds to replenish the rainforest and pollinate a variety of plants.
- Ⓒ Many bats are endangered and the loss of a single species can have ramifications throughout the ecosystem.

Viewers should be informed that killing bats-or even disturbing them-may be illegal depending on the species and country. We would like Discovery Channel to ensure this edition of *Born Survivor* and related footage is not aired again and that [this footage](#) is removed from YouTube, the Discovery Channel website and all other communications. We hope Discovery Channel uses all its nature programming to forward conservation efforts!

## PLANT PROFILE

**Common name:** Twinflower; Oblong twinflower

**Botanical name:** *Dyschoriste oblongifolia* (Michx.) Kuntze

**Family:** Acanthaceae

**Zone:** 8-10

**Plant Habit:** Erect to sprawling perennial groundcover

**Habitat:** Sandhills, pine flatwoods, and upland mixed forests

**Size:** 8-12 inches (h)

**Leaves:** Opposite, sessile, and narrow; margins entire

**Bloom:** Paired, lavender, 1 to 2-inch long, tube-shaped flowers in leaf axils

**Flowering time:** Late spring to early winter

**Distribution:** Throughout peninsular Florida and eastern panhandle

### Growing conditions

**Light:** Part sun

**Water:** Dry, tolerates some moisture

**Soil:** Average

**Propagation:** Seeds; cuttings, division

**Motility:** Slow spreading by rhizomes

**Maintenance:** Annual pruning of old stems

**Availability:** Usually available from local nurseries

**Comments:** During the winter, twinflower becomes dormant; the leaves turn a brownish orange and may drop; the buckeye butterfly uses twinflower as a larval food source; three species of twinflower occur in Florida: *D. angusta* is occasionally observed in moist flatwoods and *D. humistrata* in swamps.

### References:

Bowman, Sheryl, Debbie Butts, Betsy Davis, George Kish, John Marsh, Ann Nord, Carl Strohmenger, and Richard Wunderlin, 2005, *The Right Plants for Dry Places – Native Plant Landscaping in Central Florida*, second edition: Great Outdoors Publishing Co., St. Petersburg, Florida, 128 p.

Osorio, Rufino, 2001, *A Gardener's Guide to Florida's Native Plants*: University Press of Florida, Gainesville, Florida, 345 p.

Taylor, Walter Kingsley, 1998, *Florida Wildflowers in Their Natural Communities*: University Press of Florida, Gainesville, Florida, 370 p.

Wunderlin, R.P. and B.F. Hansen, 2003, *Guide to Vascular Plants of Florida*, second edition, University Press of Florida, Gainesville, Florida, 787 p.

Wunderlin, R.P. and B.F. Hansen, 2010, *Atlas of Florida Vascular Plants*: University of South Florida, Institute of Systematic Botany

(<http://plantatlas.usf.edu/>)

Information compiled by George R. Kish, photos by Shirley Denton



*Dyschoriste oblongifolia*  
Photo by Shirley Denton

## Florida Native Plant Society Membership Application

Membership in the Florida Native Plant Society enables you to receive their wonderful quarterly magazine *The Palmetto*. Joining the SNPS also entitles you to membership privileges in the Suncoast Native Plant Society and a subscription to their monthly newsletter *The Suncoast Grapevine*. Contact the membership chair, Shirley Denton, at 986-6485.

### Check pertinent category:

- |  |   |
|--|---|
| <input type="checkbox"/> Individual/Renewal \$35   | <input type="checkbox"/> Not-for-profit organization \$50 |
| <input type="checkbox"/> Full time student \$15    | <input type="checkbox"/> Business or corporate \$125      |
| <input type="checkbox"/> Library subscription \$15 | <input type="checkbox"/> Supporting \$100                 |
| <input type="checkbox"/> Family or household \$50  | <input type="checkbox"/> Donor \$250                      |
| <input type="checkbox"/> Contributing \$75         |   |
| <input type="checkbox"/> Life \$1,000              |   |

New Member  Renewal

Name \_\_\_\_\_

Business name or organization \_\_\_\_\_

Address \_\_\_\_\_

City, State and Zip \_\_\_\_\_

Home phone \_\_\_\_\_ Email \_\_\_\_\_

Make check payable to **FNPS**.

Detach and mail to:

**FNPS**

**P.O. Box 278**

**Melbourne, FL 32902-0278**

## Activities & Committee Chairs

### Field Trips

Gail Parsons

### Publications

Dick Wunderlin 977-6484

George Kish 920-0853

### Librarian

Vikki Sinclair 989-2896

### Membership

Shirley Denton 986-6485

### Newsletter Editor

Shawna Everidge 659-4298

Mike Fite, Assistant 977-0892

### Programs and Publicity

Shirley Denton

### Outreach

Fred Mulholland

### USF Plant Sale

Troy Springer 967-4538

### USF Botanical Garden Liaison

Kim Hutton 974-2329

### Chapter Representative

Troy Springer

### Webmaster

Shirley Denton 986-6485

### Conservation

Ron Chicone

Daphne Lambright

Bob Upcavage

## Newsletter Submissions

Deadline for the next issue:

**JULY 1**

Please send articles and original artwork for The Suncoast Grapevine to **Shawna Everidge**, by the **deadline** of this month. Text should be in MS Word; graphics should be in a standard graphic format (.jpg, .bmp, .gif). Previously published artwork should be accompanied by a letter of permission from the original publisher.

Email...

[severidge@plantcitygov.com](mailto:severidge@plantcitygov.com)



## Meeting Locations

Suncoast Native Plant Society, Inc. meets the third Wednesday of the month at 7:00 p.m. at the **Hillsborough Extension office in Seffner.**

### SNPS Web Address:

<http://www.SuncoastNPS.org>



## Officers & Board of Directors

### President

Troy Springer

### Vice-president

Shirley Denton

### Secretary

Ron Chicone

### Treasurer

Daphne Lambright

### Board Members

Gail Parsons

Fred Mulholland

*The SNPS BOD meets regularly at a variety of locations. If you are interested in attending a BOD meeting, please check the location at a monthly membership meeting or call Troy Springer at 813-967-4538.*

Suncoast Chapter of Florida Native Plant Society, Inc.  
P.O. Box 1158  
Seffner, FL 33583-1158

**Please deliver to:**