

www.fnps.org/chapters/suncoast

# The Suncoast

Suncoast Native Plant Society,



**Volume 21 Number 8**

**AUGUST 2004**

**August 18 Meeting  
(at the Learning Gate Charter School)**

## **CULTIVATION OF ERICACEOUS PLANTS**

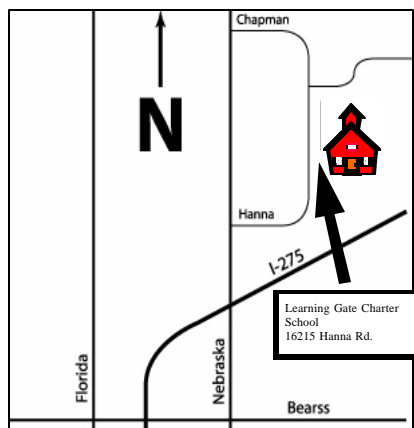
by Michael Kenton

Some of the most attractive plants native to Florida are members of the Ericaceae, or Heath family, which includes, among others, Pipestem, Tarflower, Blueberry, Huckleberry, Staggerbush, and Azalea. Mike Kenton, owner of Environmental Equities Nursery, will share his considerable expertise in the cultivation of Ericaceous plants, gained in 35 years of experience, at our August 18<sup>th</sup> meeting. Nancy Desmond, whom many of you know from visits to Environmental Equities, will bring plants to illustrate Mike's presentation, and Mike has promised to put some of them on our plant raffle table.

Mike was charter Vice President of the Suncoast Native Plant Society, and has continued his membership in FNPS ever since, belonging consecutively to the Pinellas, Nature Coast, and, currently, the Serenoa chapter. Mike's Environmental Equities is one of the best native nurseries in the state, and one of the few that does not confine itself to wholesale operations. In addition to his work in the native nursery business, Mike holds the post of County Forester for Manatee County. He earned a BS in Forestry at the University of Georgia, and a MPA in Environmental Management at Golden Gate University.

We will follow up Mike's presentation with a buying trip to Environmental Equities on Saturday August 21<sup>st</sup>.

--- Contributed by Harriett Wright



## **Message from the President**

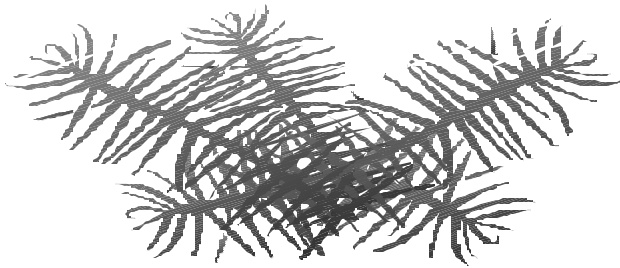
The July meeting was a huge success! We joined together with our friends from the Sierra Club and the Tampa Audubon Society for a great evening of eating and socializing. The evening was topped off with a wonderful presentation about butterfly habitats by Craig Huegel.

Program chairs and Field Trip chairs from each organization will be meeting informally to plan several combined activities. It is my hope that our organizations can work together, as our missions permit, to develop a stronger voice for preservation, conservation and education regarding native plant communities.

I wish to extend my heartfelt thanks to all of the people who contributed food, raffle plants, gift seedlings, conversation, and camaraderie to this event. I specifically wish to thank Betty Wargo for working around a new floor installation to accommodate our meeting.

You are all members of a great organization and you know how to have a good time. Let's do it again in November!

**George Kish**



## **Plant Raffle Guidelines**

By Harriett Wright

When you bring plants to the plant raffle, please sign the raffle sheet and record the number of plants you donated. Before the start of the raffle, we will offer first choice of a plant on the raffle table to our speaker, followed by plant donors in the order of the number of plants donated. After these selections have been made, we will begin the raffle.

## **MEETING PLACE SEARCH COMMITTEE INTERIM REPORT**

(Katherine Abbey, Dawn Barton, Debbie Butts, and Harriett Wright, Chairperson)

Of the sites which have been suggested by members, possible meeting places include the County Cooperative Extension Service on County Road, the First United Church of Tampa on East Fowler, and the Science Building at the University of Tampa.

The following sites have been eliminated: The Brotherhood of Electrical Workers Hall is not available to outside organizations, the Hillsborough County Main Library has no free parking, Sterling Heights Recreation Center and Thonotosassa Recreation Center both close at 6:00, Jefferson High School has no appropriate room available, the Lightfoot Recreation Center has a full schedule of activities, Seminole Heights Garden Center's new policy precludes long term scheduling, the Unitarian Universalist Church has its own activities scheduled, and WMNF is not available at this time.

We are in the process of investigating the Lowry Park Zoo and the Woodmont Clubhouse at the Temple Terrace golf course, both of which were recently suggested. If you have other possible sites to suggest, please contact the committee.

Harriett Wright, 908-9398

## **A Big Thank You**

Thanks to those who contributed Raffle plants at the last meeting, Barbara Mulholland, George Kish, Jim Stephens, Dolly Cummings, Jan & Jeff Means, Mike Fite, Pat Clouser, Harriett Wright, Sally Sun and Fred Spriggs. We had nearly more than we could handle. A great job well done, members!

Remember, you get a free plant before the raffle begins when you donate plants for the raffle.



## Field Trip-Buying Trip

Saturday August 21.

9:30 a.m.

Environmental Equities, Inc.

12547 Denton Avenue

Hudson, Florida

Operated by Michael and Nancy Desmond, 727-992-8905

Open by Appointment only

Environmental Equities has a large variety of specialty native species including wildlife, butterfly, scrub, wetland and ornamental plants. Many species are rare and endangered.

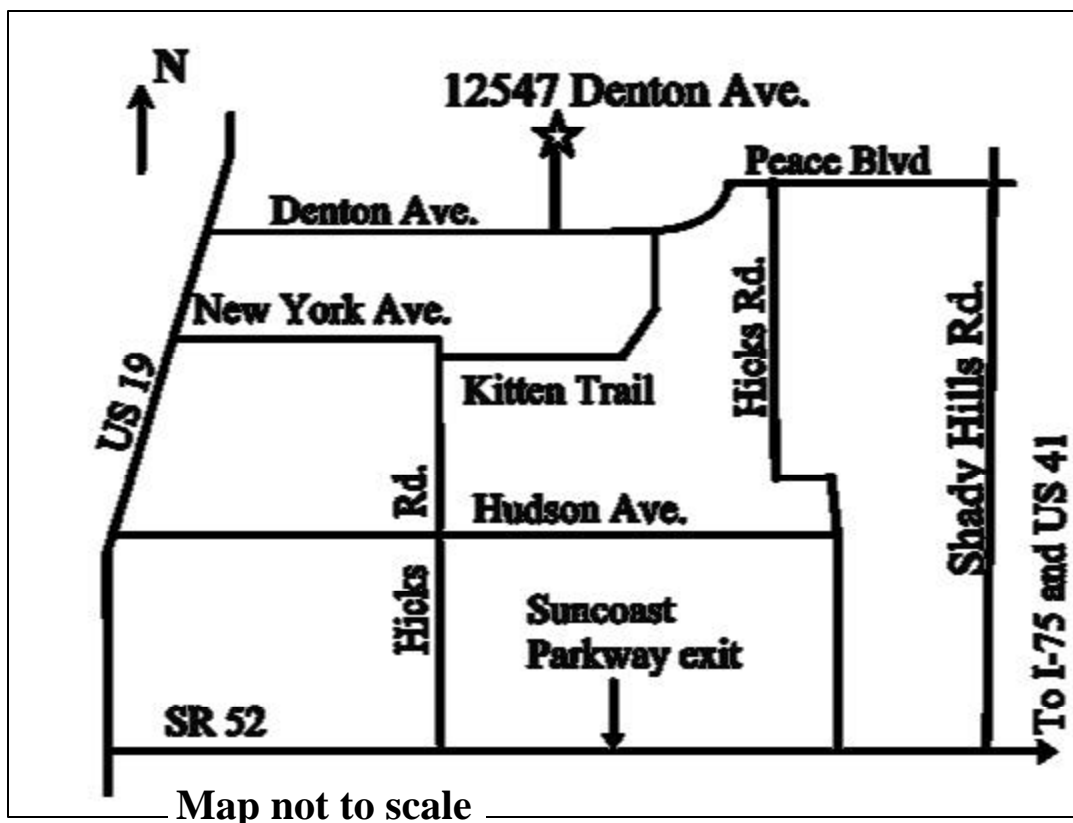
### Directions

1) From I-75 take SR52 west to Shady Hills Road (15 mi.). Turn right and go 4.7 miles to Peace Blvd becomes Denton Road. Turn left and go 3.5 mi. to nursery on right (Berryfield Lane street sign is just past Kitten Trail on your left)... OR

3) From Tampa go US41 north to SR 52 and turn left (west). Turn right on Shady Hills Road and follow directions above...OR

2) From Suncoast Expressway go SR 52, turn east and go to Shady Hills Road and follow the directions above .

Contact: George Kish for more information, 920-0853, gkish@tampabay.rr.com



## PLANT PROFILE

**Common Name:** Spider Lily

**Botanical Name:** *Hymenocallis latifolia*  
(Mill.) M. Roem.

**Family:** Amaryllidaceae (Amaryllis Family)

**Plant Habit:** A perennial herb

**Size:** 1-2 feet tall

**Leaves:** Basal, strap-like, 1-2 feet tall

**Inflorescence:** An umbel of 2-4 white flowers, app. 6 inches in diameter, with 6 narrow petals surrounding a cuplike veil of tissue and 6 spreading stamens tipped with yellow anthers.

**Fruit:** A thick, fleshy capsule

**Habitat:** Coastal dunes, river banks, flatwoods

**Flowering Time:** Spring to fall

**Distribution:** Central and south Florida

**Light:** Full sun to light shade

**Soil:** Adaptable to most soil types; salt-tolerant

**Propagation:** Seed and bulb division; self-spreading to form attractive beds

**Maintenance:** Protect from leaf-chewing grasshoppers

**Availability:** Several native plant nurseries

**Wildlife:** Toxic to grazing mammals

### References:

Baker, Mary Francis, 1938, *Florida Wild Flowers: The MacMillan Company, New York, N.Y., pp.42-44.*

Nelson, Gil, 2003, *Florida's Best Native Landscape Plants: University Press of Florida, Gainesville, Florida, pp158-159.*

Wunderlin, R.P. and Hansen, B.F., 2003, *Guide To the Vascular Plants of Florida second edition :University Press of Florida, Gainesville, Florida, pp73-75.*

**Information compiled by:** Carmel vanHoek

**Photographs by:** T. Ann Williams and Roger Hammer



*Hymenocallis latifolia*  
Photo by T. Ann Williams



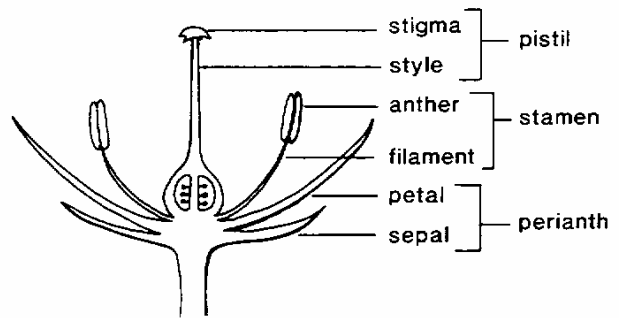
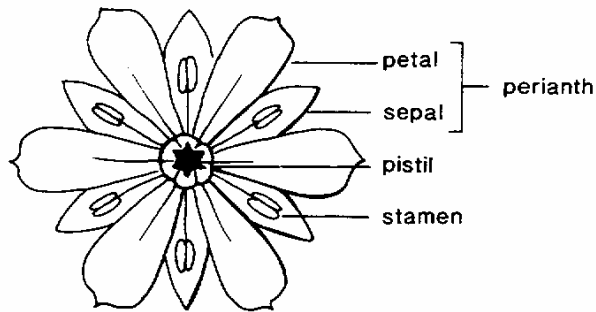
*Hymenocallis latifolia*  
Photo and © by Roger Hammer  
Wildflowers of the Everglades



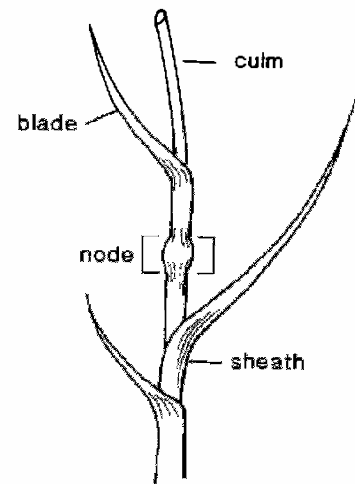
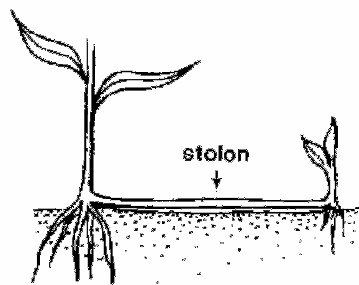
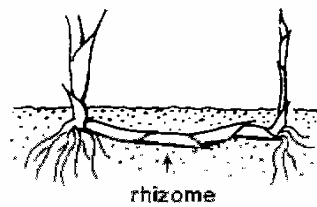
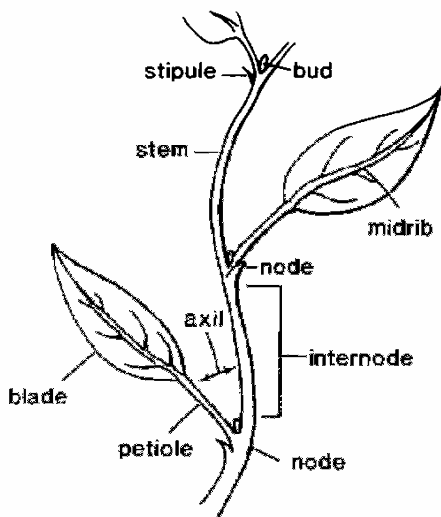
The Florida Native Plant Society was organized in 1980 to promote the preservation, conservation, and restoration of the native plants and native plant communities of Florida. For more information about the Florida Native Plant Society, please visit our web site: [www.fnps.org](http://www.fnps.org).

# “BOTANY 102” Simplified

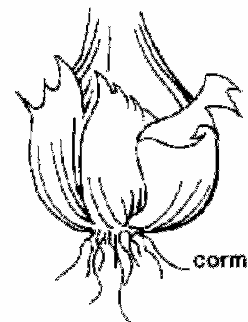
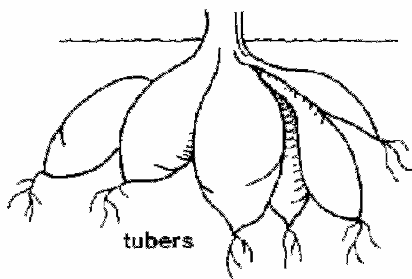
More drawings to help with native identification.



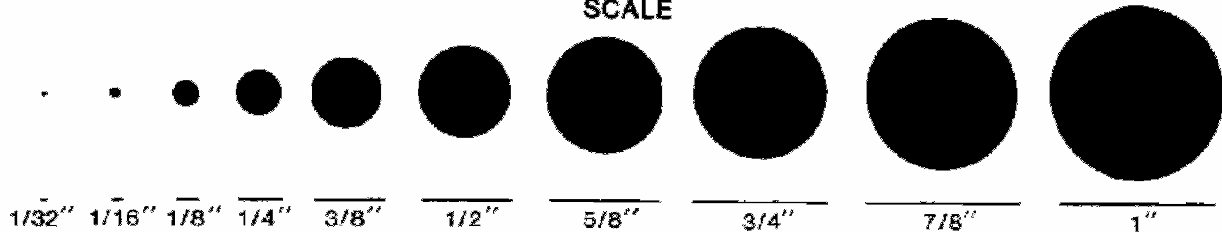
## STEMS



## ROOTS



## SCALE



# Suncoast Calendar

**REGULAR MEETINGS OF SUNCOAST NATIVE PLANT SOCIETY** at the Learning Gate Charter School, 16215 Hanna Road, in Lutz. 7 PM

AUG 18 SEP 15 OCT 20 NOV 17

**FNPS PINELLAS CHAPTER:** (Moccasin Lake Nature Park, 2750 Park Trail, Clearwater; 727-544-7341); Weds; 7:30 pm

**SEP 1** - Florida Wildflowers as roadside plants

**SEP 19** - Starkey Wilderness Park

**ST. PETERSBURG AUDUBON** Call 582-2461 or website, [stpeteaudubon.org/main.htm](http://stpeteaudubon.org/main.htm)  
No Scheduled events until September

## **LOWRY PARK ZOO**

**SEP 12** - Special \$2.00 admission (Sunday)

## **HILLS CO. MASTER GARDNER PROGRAMS.**

Call 813-744-5519 x144 for information about locations or website: [hillsborough.extension.ufl.edu/calendar.htm](http://hillsborough.extension.ufl.edu/calendar.htm).  
Pre-registration required.

**JUL 17 & AUG 14**- Rain Barrel Workshop 9:00 - 10:00 am

**AUG 21** - Landscape Design Class 9:00 - 12 noon

## **SELBY GARDENS** 941.366.5731

**JUL 27** - Noon Time Lecture Series: 12:00 pm - 1:00 pm; "Orchids of Ecuador" by Wesley Higgins, Ph.D.

## **CHINSEGUT NATURE CENTER**

(352)754-6722 or website: [/floridaconservation.org/chinsegut/schedule.html](http://floridaconservation.org/chinsegut/schedule.html)

**AUG 24** - 7:00 pm Endangered Red Cockaded Woodpeckers.

**SEP 14** 7:00 pm Florida's Wading Birds

## **USF BOTANICAL GARDEN** 974-2329.

**AUG 21** - Trees for Florida Workshop. Fee.

**AUG 28** - Orchids Workshop. Fee

## **SNPS 2004**

### **FIELD TRIP SCHEDULE**

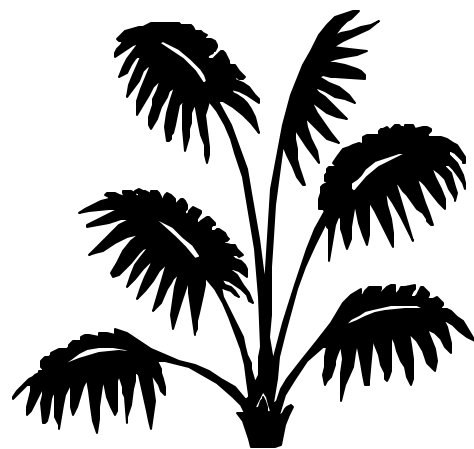
We are in need of a Chairperson. En Lieu of a Chairperson could several members sign up for organizing a trip for one month? September is in the planning stages. Any Volunteers? Contact George Kish at 920-0853.

**AUG** Environmental Equities (see page 2)

**SEP** Herbarium Visit and USFBG - Dick Wunderlin, Mike Fite & Shirley Brown.

**OCT** Tentative visit to the USF EcoArea to view sandhill, flatwoods, and Cypress swamp plant communities.

**NOV** \_\_\_\_\_



## SUNCOAST NATIVE PLANT SOCIETY PROGRAM 2004

**January 21:** *Talking With the Animals*, by Bill Thomas, photojournalist. How to get up close and personal with animals in the wild.

**February 18:** *Smart Growth*, by Miki Renner, Senior Planner at Swiftmud. Replacing current sprawl-dominated development with town-centered planning that serves the economy, the community, and the environment.

**March 17:** *Earth Etiquette*, by James Mendenhall, Park Naturalist with the Florida DEP, Division of Recreation and Parks. Strategies to make our presence in the natural world less offensive and more positive for all concerned.

**April 21:** *Clever Plants Interacting with Canny Bugs*, by Mark Deyrup, Senior Research Biologist, Archbold Biological Station. Fascinating relationships between native plants and insects.

**May 19:** *Members' Forum*. What we're doing in our gardens.

**June 16:** *The Conservation Program at Historic Bok Sanctuary*, by Cheryl Peterson, Conservation Manager of Bok Sanctuary. Using molecular genetics to augment the more traditional conservation efforts on rare plant species in north and central Florida.

**July 21,** joint meeting with Audubon and Sierra: *The Horticulture of Butterfly Plants*, by Craig Heugel, manager of Brooker Creek Preserve in Pinellas County, How to grow the plants that butterfly larvae love to munch.

**August 18:** *The Ericaceae in Florida*, by Michael Kenton, owner of Environmental Equities native plant nursery. Members of the Heath Family in Florida: how to identify them, how to grow them, and where to get them.

**September 15:** *Florida's Fire Ecology*, by Carl Weekley, Research Biologist, Archbold Biological Station. Fire is a central force defining most Florida ecosystems from marshes to xeric uplands.

**October 20:** *Life History of the Gopher Tortoise*, by Ray Ashton, of the Ashton Biodiversity Research & Preservation Institute.

**November 17:** Bio-prospecting for Medicinal Plants by Dr. Maureen Bonness, Issues surrounding the search and subsequent harvesting of plants for new botanical drugs.

## Florida Native Plant Society Membership Application

Membership in the Florida Native Plant Society enables you to receive their wonderful quarterly magazine *The Palmetto*. Joining the FNPS also entitles you to membership privileges in the Suncoast Native Plant Society, Inc. and a subscription to their monthly newsletter *The Suncoast Grapevine*. Contact the membership chair, George Kish at (813) 920-0853.

New Member  Renewal

Name \_\_\_\_\_

Business name or organization \_\_\_\_\_

Address \_\_\_\_\_

City, State and Zip \_\_\_\_\_

Home phone \_\_\_\_\_ Work phone \_\_\_\_\_

E-mail and/or FAX \_\_\_\_\_

### Check pertinent category:

- |  |   |
|--|---|
| <input type="checkbox"/> Individual \$25           | <input type="checkbox"/> Not-for-profit organization \$50 |
| <input type="checkbox"/> Full time student \$15    | <input type="checkbox"/> Business or corporate \$100      |
| <input type="checkbox"/> Library subscription \$15 | <input type="checkbox"/> Supporting \$100                 |
| <input type="checkbox"/> Family or household \$30  |   |
| <input type="checkbox"/> Contributing \$40         |   |
| <input type="checkbox"/> Donor \$250               |   |

Make check payable to **FNPS**.

Detach and mail to:

**Suncoast Native Plant Society**

**P.O. Box 82893**

**Tampa, FL 33682-2893**

## Activities & Committee Chairs

### Field trips

Vacant

### Publications

Richard Wunderlin 977-6484

### Librarian

Vikki Sinclair 989-2896

### Membership

George Kish 920-0853

### Newsletter editor

Shirley Brown 977-0454

Mike Fite, Assistant 977-0892

### Programs

Harriett Wright 908-9398

### Publicity

Ameé Bailey 863-206-3439

### Refreshments

Lucy Hoyt 960-3178

### Education

Betty Wargo 237-1509

### Book Sales

Sally Sun 935-1312

### USF Plant Sale

Sally Sun 935-1312

### Conference

Ameé Bailey 863-206-3439

### Meeting Location

Harriet Wright 908-9398

### USF Botanical Garden

Shirley Brown 977-0454

## Officers & Board of Directors

### President

George Kish 920-0853

### Vice-president

Harriett Wright 908-9398

### Secretary

Ameé Bailey 863-206-3439

### Treasurer

Fred Spriggs 935-1312

### Chapter Representative

Ameé Bailey 662-5954

### Board Members

Ameé Bailey 863-206-3439

Cliff Brown 988-3211

Steve Dickman 936-7268

George Kish 920-0853

Bob Scheible 626-6815

Fred Spriggs 935-1312

Harriett Wright 908-9398

## Newsletter Submissions

**Deadline for the next issue:**

**Aug 31**

Please send articles and original artwork for The Suncoast Grapevine to the editor, Shirley Brown, by the **deadline** of each month (earlier, please, if not typed). Text should be in MS Word; graphics should be in a standard graphic format. Previously published artwork should be accompanied by a letter of permission from the original publisher.

Mail:..... SNPS, Inc.

P.O. Box 82893

Tampa, FL 33682-2893

Email:...srbrown11@msn.com

## SNPS Address

**Suncoast Native Plant Society, Inc.**

**P.O. Box 82893**

**Tampa, FL 33682-2893**

## Meeting Location

Suncoast Native Plant Society, Inc. meets the third Wednesday of the month at 7:00 p.m. at the **Learning Gate Charter School, 16215 Hanna Road, Lutz.**

## SNPS Web Address

**[www.fnps.org/chapters/suncoast](http://www.fnps.org/chapters/suncoast)**

## Grapevine Subscription

You may subscribe to the Suncoast Grapevine (not including membership in the SNPS or the FNPS) for \$10 per year. Contact George Kish at 920-0853.

**Stamp**



**Please deliver to:**